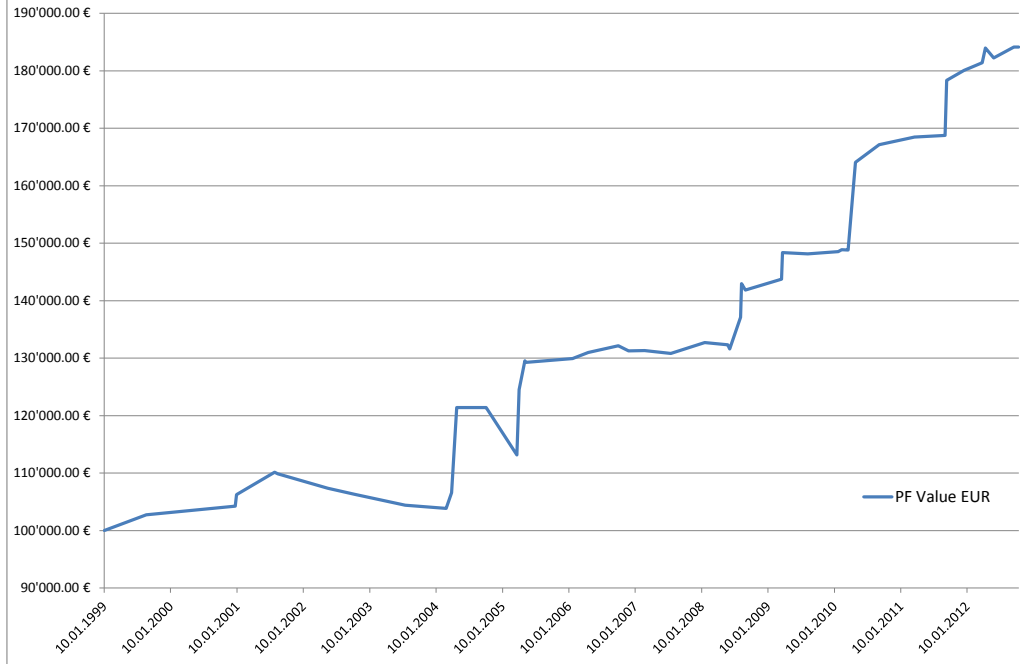


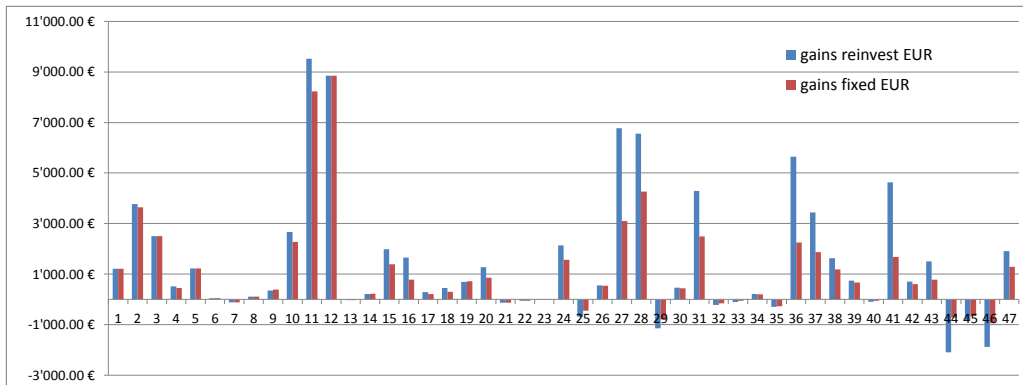
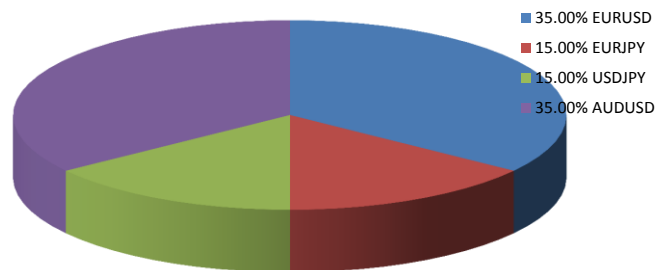
average gain per trade %	4.51%
maximum drawdown %	-5.52%
maximum gain %	25.45%
absolut gain since start netto (reinvestment) in EUR	84.13%
compared to benchmark	59.13%
absolut gain since start (fixed investment amount)	52.00%
compared to benchmark	27.00%
Performance average per year	6.14%
Performance average per year compared to benchmark	4.31%
total gains with fixed investment amounts EUR after fees	€ 41'601.80
total gains reinvestment after fees	€ 84'130.52
average gains per year reinvestment	€ 6'139.67
starting capital at 10.01.1999	€ 100'000.00
end capital reinvestment by now	€ 184'130.52
maXXit fees average per year	€ 759.00
average holding duration in days per trade	289.26
absolut holding duration in years	13.70

maXXit FOREX long-short strategy

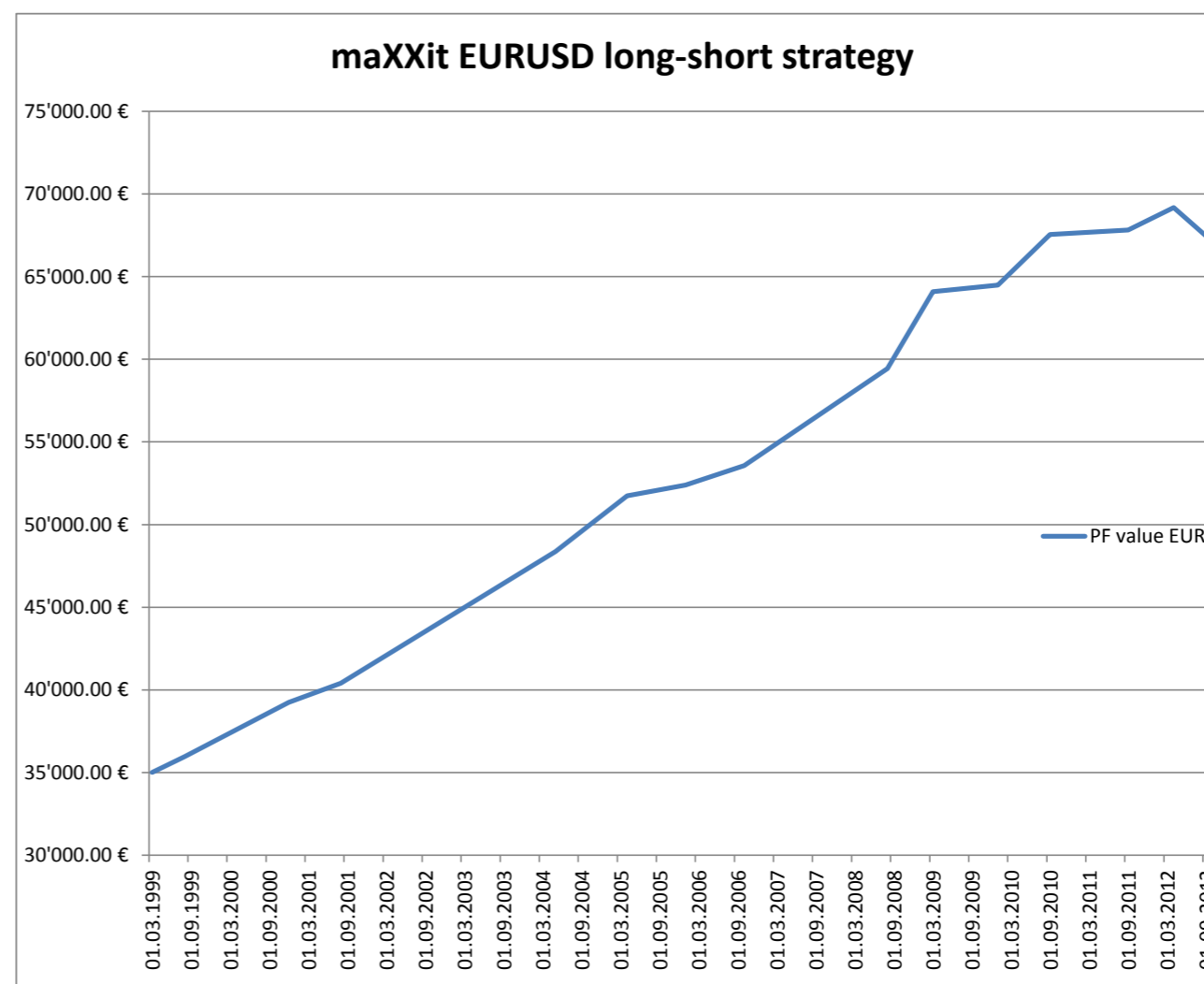
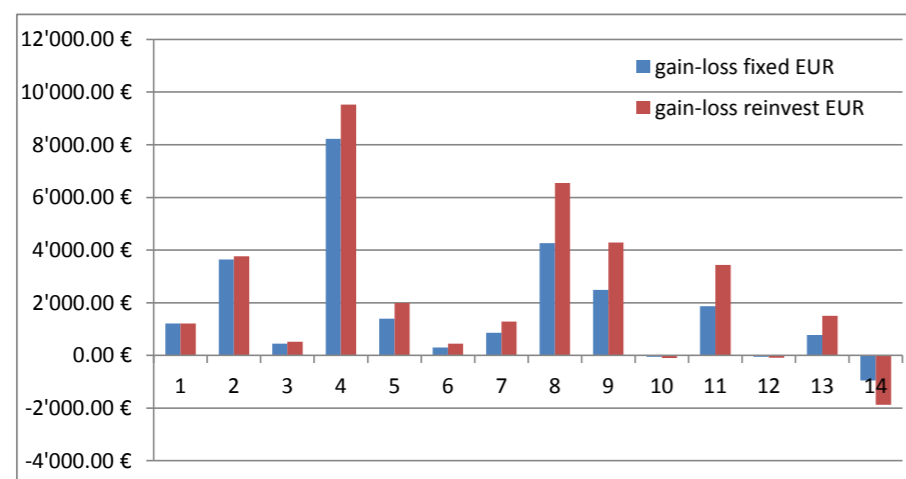


*Benchmark is the allocation weighted Performance of the underlyings

asset allocation FOREX portfolio

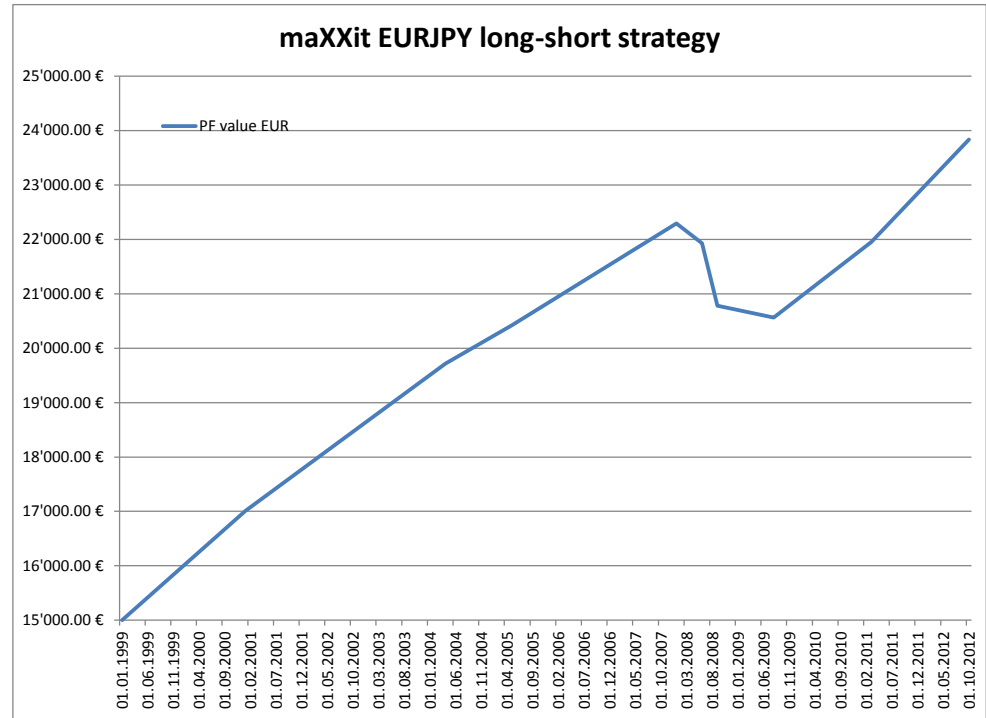
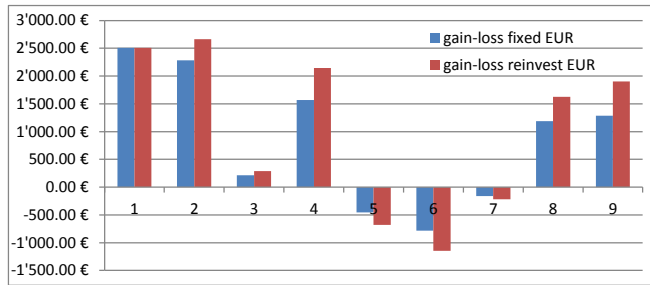


average gain per trade	4.99%
maximum drawdown %	-2.70%
maximum gain %	23.51%
absolut gain since start (reinvest gains)	92.74%
compared to benchmark DAX Performance Index	76.45%
absolut gain since start (fixed investment amount)	69.82%
compared to benchmark DAX Performance Index	53.53%
Performance average per year	7.13%
Performance average per year compared to benchmark	5.88%
maXXit fees average per year	€ 375.97
total gains with fixed investment amount	€ 24'437.93
total gains with reinvested gains	€ 32'457.72
average holding duration in days per trade	259.29



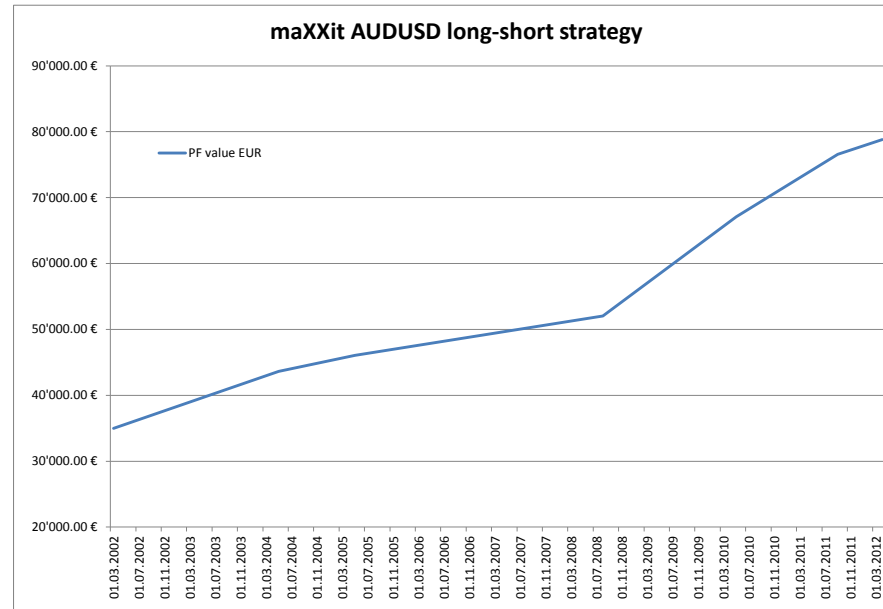
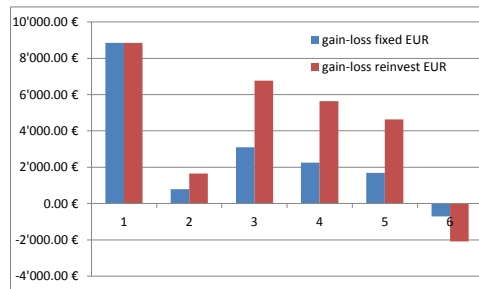
Tradelist																		
Underlying	Date open	price open	trade	investment amount	Date close	price close	gain-loss EUR	value at close EUR	% gain-loss	investment amount reinvest	gain-loss reinvest	value reinvest absolut	value reinvest after fees	maXXit fees	% maXXit fees	holding duration in days	PF value weighted to Portfolio	
Benchmark	07.03.1999	1.0986	long	35'000.00 €	23.09.2012	1.3124	5'701.77 €	40'701.77 €	16.29%						20.00%	4876.00	€ 100'000.00	
1	EURUSD weekly	07.03.1999	1.0986	short	35'000.00 €	29.08.1999	1.0606	1'210.63 €	36'210.63 €	3.46%	35'000.00 €	1'210.63 €	36'210.63 €	35'968.51 €	242.13 €	20.00%	172.00	€ 103'216.82
2	EURUSD weekly	10.11.1999	1.0303	short	35'000.00 €	31.12.2000	0.9230	3'645.05 €	38'645.05 €	10.41%	36'210.63 €	3'771.14 €	39'981.77 €	39'252.76 €	729.01 €	20.00%	411.00	€ 113'237.27
3	EURUSD weekly	22.04.2001	0.8892	short	35'000.00 €	05.08.2001	0.8777	452.65 €	35'452.65 €	1.29%	39'981.77 €	517.08 €	40'498.85 €	40'408.32 €	90.53 €	20.00%	103.00	€ 114'611.23
4	EURUSD weekly	30.05.2002	0.9014	long	35'000.00 €	02.05.2004	1.1785	8'229.53 €	43'229.53 €	23.51%	40'498.85 €	9'522.47 €	50'021.32 €	48'375.41 €	1'645.91 €	20.00%	692.00	€ 139'913.79
5	EURUSD weekly	22.08.2004	1.2372	long	35'000.00 €	10.04.2005	1.2884	1'390.87 €	36'390.87 €	3.97%	50'021.32 €	1'987.81 €	52'009.13 €	51'730.95 €	278.17 €	20.00%	228.00	€ 145'195.68
6	EURUSD weekly	12.06.2005	1.2252	short	35'000.00 €	29.01.2006	1.2146	302.81 €	35'302.81 €	0.87%	52'009.13 €	449.96 €	52'459.09 €	52'398.53 €	60.56 €	20.00%	227.00	€ 146'391.30
7	EURUSD weekly	30.04.2006	1.2371	long	35'000.00 €	08.10.2006	1.2681	855.61 €	35'855.61 €	2.44%	52'459.09 €	1'282.42 €	53'741.51 €	53'570.39 €	171.12 €	20.00%	158.00	€ 149'798.87
8	EURUSD weekly	03.12.2006	1.3117	long	35'000.00 €	17.08.2008	1.4938	4'266.64 €	39'266.64 €	12.19%	53'741.51 €	6'551.30 €	60'292.81 €	59'439.48 €	853.33 €	20.00%	614.00	€ 167'206.60
9	EURUSD weekly	07.09.2008	1.4698	short	35'000.00 €	29.03.2009	1.3653	2'488.43 €	37'488.43 €	7.11%	60'292.81 €	4'286.70 €	64'579.51 €	64'081.83 €	497.69 €	20.00%	202.00	€ 178'596.99
10	EURUSD weekly	16.08.2009	1.4173	long	35'000.00 €	31.01.2010	1.4151	-54.41 €	34'945.59 €	-0.16%	64'579.51 €	-100.40 €	64'479.11 €	64'479.11 €	-10.88 €	20.00%	165.00	€ 178'330.21
11	EURUSD weekly	07.03.2010	1.3620	short	35'000.00 €	12.09.2010	1.2894	1'865.64 €	36'865.64 €	5.33%	64'479.11 €	3'436.99 €	67'916.10 €	67'542.98 €	373.13 €	20.00%	185.00	€ 187'462.79
12	EURUSD weekly	27.03.2011	1.4181	long	35'000.00 €	11.09.2011	1.4162	-46.96 €	34'953.04 €	-0.13%	67'916.10 €	-91.12 €	67'824.99 €	67'824.99 €	-9.39 €	20.00%	164.00	€ 187'220.68
13	EURUSD weekly	18.09.2011	1.3570	short	35'000.00 €	01.04.2012	1.3269	776.34 €	35'776.34 €	2.22%	67'824.99 €	1'504.45 €	69'329.43 €	69'174.16 €	155.27 €	20.00%	193.00	€ 191'218.21
14	EURUSD weekly	27.05.2012	1.2779	short	35'000.00 €	23.09.2012	1.3124	-944.91 €	34'055.09 €	-2.70%	69'329.43 €	-1'871.72 €	67'457.72 €	67'457.72 €	-188.98 €	20.00%	116.00	€ 186'244.79
total values								24'437.93 €	69.82%		32'457.72 €	94.05%	92.74%	4'887.59 €		3630.00		
Performance compared to Benchmark buy and hold strategy								18'736.17 €	53.53%		67'457.72 €	77.76%	76.45%					

average gain per trade	5.67%
maximum drawdown %	-5.22%
maximum gain %	16.72%
absolut gain since start (reinvest gains)	58.90%
compared to benchmark DAX Performance Index	37.69%
absolut gain since start (fixed investment amount)	51.06%
compared to benchmark	-21.22%
Performance average per year	4.53%
Performance average per year compared to benchmark	2.90%
maXXit fees average per year	€ 117.83
total gains with fixed investment amount	€ 7'659.24
total gains with reinvested gains	€ 9'093.08
average holding duration in days per trade	297.36



Tradelist																			
Underlying	Date open	price open	trade	investment amount	Date close	price close	gain-loss EUR	value at close EUR	% gain-loss	investment amount reinvest	gain-loss reinvest	value reinvest	value reinvest gains after fees	maXXit fees	% maXXit fees	holding duration in days	PF value weighted to Portfolio		
Benchmark	10.01.1999	128.9700	short	15'000.00 €	19.10.2012	101.6050	3'182.72 €	18'182.72 €	21.22%						20.00%	4959.00	100000		
1 EURJPY weekly	10.01.1999	128.9700	short	15'000.00 €	07.01.2001	107.4100	2'507.56 €	17'507.56 €	16.72%	15'000.00 €	2'507.56 €	€ 17'507.56	17'006.05 €	501.51 €	20.00%	717.00	116'215.55 €		
2 EURJPY weekly	04.02.2001	108.5100	long	15'000.00 €	04.04.2004	127.9900	2'282.99 €	17'282.99 €	15.22%	17'507.56 €	2'664.64 €	€ 20'172.20	19'715.60 €	456.60 €	20.00%	1140.00	133'446.89 €		
3 EURJPY weekly	16.05.2004	133.3700	long	15'000.00 €	15.05.2005	135.3250	216.70 €	15'216.70 €	1.44%	20'172.20 €	291.42 €	€ 20'463.62	20'420.28 €	43.34 €	20.00%	359.00	135'331.42 €		
4 EURJPY weekly	06.11.2005	139.6300	long	15'000.00 €	27.01.2008	155.9600	1'570.60 €	16'570.60 €	10.47%	20'463.62 €	2'142.67 €	€ 22'606.29	22'292.17 €	314.12 €	20.00%	801.00	149'187.36 €		
5 EURJPY weekly	24.02.2008	158.1950	short	15'000.00 €	01.06.2008	162.9625	-452.05 €	14'547.95 €	-3.01%	22'606.29 €	-681.28 €	€ 21'925.01	21'925.01 €	-90.41 €	20.00%	97.00	144'781.73 €		
6 EURJPY weekly	13.07.2008	167.5825	long	15'000.00 €	07.09.2008	159.2675	-783.12 €	14'216.88 €	-5.22%	21'925.01 €	-1'144.66 €	€ 20'780.35	20'780.35 €	-156.62 €	20.00%	54.00	137'379.62 €		
7 EURJPY weekly	19.10.2008	136.9950	short	15'000.00 €	16.08.2009	138.4450	-158.76 €	14'841.24 €	-1.06%	20'780.35 €	-219.95 €	€ 20'560.41	20'560.41 €	-31.75 €	20.00%	297.00	135'957.31 €		
8 EURJPY weekly	04.04.2010	124.5450	short	15'000.00 €	27.03.2011	114.6825	1'187.82 €	16'187.82 €	7.92%	20'560.41 €	1'628.14 €	€ 22'188.55	21'950.99 €	237.56 €	20.00%	353.00	146'485.96 €		
9 EURJPY weekly	04.11.2011	111.1450	short	15'000.00 €	19.10.2012	101.6050	1'287.51 €	16'287.51 €	8.58%	22'188.55 €	1'904.53 €	€ 24'093.08	23'835.58 €	257.50 €	20.00%	345.00	158'801.91 €		
total values							7'659.24 €		51.06%		9'093.08 €	60.62%	58.90%	1'531.85 €		4163.00			
Performance compared to Benchmark buy and hold strategy							4'476.53 €		29.84%		24'093.08 €	39.40%	37.69%						

average gain per trade	9.53%
maximum drawdown %	-2.59%
maximum gain %	25.45%
absolut gain since start (reinvest gains)	125.10%
compared to benchmark	91.19%
absolut gain since start (fixed investment amount)	57.16%
compared to benchmark	23.26%
Performance average per year	12.51%
Performance average per year compared to benchmark	9.12%
maXXit fees average per year	€ 319.09
total gains with fixed investment amount	€ 15'954.55
total gains with reinvested gains	€ 25'457.81
average holding duration in days per trade	406.33



Tradelist																															
Underlying	Date open	price open	exchange rate EURAUD	trade	investment amount EUR	investment amount AUD	Date close	price close	exchange rate EURAUD	gain-loss AUD	gain-loss EUR	value at close AUD	value at close EUR	% gain-loss AUD	investment amount reinvest gains	gain-loss reinvest AUD	gain-loss reinvest EUR	value reinvest in AUD	value reinvest in EUR	value reinvest after fees	maXXit fees	% maXXit fees	holding duration in days	PF value weighted to Portfolio AUD	PF value weighted to Portfolio EUR						
Benchmark	07.03.2002	0.5232	0.5955	long	35'000.00 €	AUD 58'774.14	19.04.2012	0.7916	0.7916	AUD 11'867.10	9'394.00 €	AUD 46'867.10	44'394.00 €	33.91%									20.00%	3642.00	AUD 167'926.11	€ 100'000.00					
1	AUDUSD daily	07.03.2002	0.5232	0.5955	long	35'000.00 €	AUD 58'774.14	10.05.2004	0.7018	0.5919	AUD 14'957.34	8'853.25 €	AUD 73'731.48	43'853.25 €	25.45%	AUD 58'774.14	AUD 14'957.34	8'853.25 €	AUD 73'731.48	43'641.66 €	41'871.01 €	1'770.65 €	20.00%	783.00	AUD 210'661.37	€ 124'690.46					
2	AUDUSD daily	22.10.2004	0.7369	0.5846	long	35'000.00 €	AUD 59'870.00	13.05.2005	0.7654	0.6023	AUD 1'303.24	784.94 €	AUD 61'173.24	35'784.94 €	3.72%	AUD 73'731.48	AUD 2'745.42	1'653.57 €	AUD 76'476.90	46'062.04 €	45'905.05 €	156.99 €	20.00%	201.00	AUD 218'505.44	€ 131'605.82					
3	AUDUSD daily	17.07.2006	0.7533	0.5948	long	35'000.00 €	AUD 58'843.31	11.08.2008	0.8858	0.5917	AUD 5'235.38	3'097.77 €	AUD 64'078.69	38'097.77 €	14.96%	AUD 76'476.90	AUD 11'439.59	6'768.81 €	AUD 87'916.49	52'020.19 €	51'400.63 €	619.55 €	20.00%	744.00	AUD 251'189.98	€ 148'629.11					
4	AUDUSD daily	31.07.2009	0.8254	0.5845	long	35'000.00 €	AUD 59'880.24	05.05.2010	0.9089	0.6991	AUD 3'215.43	2'247.90 €	AUD 63'095.66	37'247.90 €	9.19%	AUD 87'916.49	AUD 8'076.83	5'646.51 €	AUD 95'993.32	67'108.93 €	66'659.35 €	449.58 €	20.00%	275.00	AUD 274'266.63	€ 191'739.80					
5	AUDUSD daily	23.09.2010	0.9552	0.7151	long	35'000.00 €	AUD 48'944.20	20.09.2011	1.0209	0.7493	AUD 2'252.42	1'687.74 €	AUD 51'196.63	36'687.74 €	6.44%	AUD 95'993.32	AUD 6'177.65	4'628.91 €	AUD 102'170.97	76'556.71 €	76'219.16 €	337.55 €	20.00%	357.00	AUD 291'917.05	€ 218'733.45					
6	AUDUSD daily	01.02.2012	1.0623	0.8082	long	35'000.00 €	AUD 43'306.11	19.04.2012	1.0355	0.7916	-AUD 905.84	-717.06 €	AUD 42'400.27	34'282.94 €	-2.59%	AUD 102'170.97	-AUD 2'644.31	-2'093.23 €	AUD 99'526.66	78'785.30 €	78'785.30 €	-143.41 €	20.00%	78.00	AUD 284'361.88	€ 225'100.87					
total values										AUD 26'057.97	15'954.55 €			57.16%		AUD 40'752.52	25'457.81 €	69.34%	125.10%	125.10%	3'190.91 €		2438.00								
Performance compared to Benchmark buy and hold strategy										AUD 14'190.86	6'560.55 €			23.26%		AUD 99'526.66	60'457.81 €	91.19%			91.19%										
€ 78'785.30																															